



BIZAFRIKA
INCORPORATING



ELLECON

A PYRAMID OF CONSTRUCTION EXCELLENCE

G R O U P P R O F I L E

OUR VISION & MISSION



Our Vision

*A Pyramid of "Engineered Construction" Excellence
"Quality is our priority and Quantity our deliverance"*

Our Mission

*To provide a high quality driven service to our customers and clients.
All projects undertaken are completed within budget and timeframe with unparalleled client satisfaction.
To ensure a positive, progressive, professional and safe working environment.
To ensure controlled and sustainable growth, within our target market.
To continuously strive to be a cooperative and a helpful contractor while never wavering from our commitment to deliver a superior quality product at a competitive price.
To train and uplift all employees and local communities in areas where Ellecon is operational.*

Biz Afrika 985 (Pty) Ltd (now trading as Ellecon Holdings), was established in 2000 by the current chairman, Otto Tshepe, and has developed into a dependable construction company which enjoys continued success in small to medium sized roads and earthworks projects.

In 2014, Biz Afrika acquired Ellecon, a company with vast experience in the building and civil construction sectors. Its name was subsequently changed to Ellecon Holdings (Pty) Ltd. The Group employs a highly talented management team and a well-balanced workforce with extensive experience in a wide range of infrastructure, civil and building construction disciplines. The Group strives to be an employer of choice and continuously train and assist with the development of its employees. We believe in forming a close, long-term relationship with our clients.

The safety of our employees is non-negotiable and as a result we employ a safety team that is highly qualified and ensures the Group's proud safety record is upheld through uncompromising commitment, continuous training, communication and on-site visibility of senior safety personnel.

We believe in uplifting & employing, training & aiding local communities in order to unlock their potential and enhance their growth. Where possible, the Group utilise local available labour during the course of each project. We utilise BBBEE rated suppliers and subcontractors who share in our commitment to quality and service and are as passionate about construction as we are.

*We abide to a strict code of conduct within the Group.
Our core values form the base of our Pyramid of Excellence:*

- Integrity
- Quality
- Performance
- Safety
- Cooperative

OUR SCOPE OF WORKS



Ellecon specialise in both building and civil construction focussing on the mining, government and private sectors:

Building Construction:

Small to medium size turnkey projects in:

- Commercial property developments: Office blocks, shopping centres
- Industrial property developments: Warehouses, small to large factory units, storage facilities
- Residential property: Medium and upmarket housing developments
- Alterations (small or large)
- Maintenance of offices and other commercial buildings

Civil Engineering:

Concrete structures

- Sub stations
- Pump stations
- Bridges & culverts
- Switching stations
- Water retaining structures
- Special floors/slabs
- Sliding (headgears, piers and silos)

Infrastructure

- Water reticulation
- Sewer reticulation
- Storm water management systems
- Concrete and Asphalt roads
- Load out stations
- Drainage systems
- Retaining walls
- Reinforced earth walls

Specialised Concrete repairs all fields

- Water retaining structures
- Floors/slabs
- Industrial chimneys
- Concrete structures
- Bridges

In addition Ellecon, with its associated partners, also offer the following services:

- Bulk earthworks
- Structural steel manufacturing and erecting
- Turnkey water and waste water solutions

OUR BBBEE POLICY



- *Majority black owned*
- *30% Black woman owned*

At Ellecon transformation is a key strategic business requirement and we aim to play a meaningful role in contributing positively towards the transformation of our country.

As part of its growth and altered focus, Ellecon converted to a limited liability group of companies which allowed us to partner with a black owned company, which shares our vision of BBBEE:

- *A strategy of growth and sustainability to realise the country's full economic potential while helping to*
- *ensure the eradicating of poverty by broadening the economic base through focusing on historically*
- *disadvantaged people, particularly black women and youth.*

Our commitment and approach to continuously improve our BBBEE include a series of initiatives to transform our management structures and staff profile and increase strategic spending on skills development, social investment, development and support of black-owned enterprises.

OUR GROUP STRUCTURE



ELLECON

A PYRAMID OF CONSTRUCTION EXCELLENCE



BIZ AFRIKA 985 PTY (LTD) INCORPORATING THE ELLECON GROUP

Registration No: 2000/006290/07

CIDB Reg. No: 136549

VAT Reg: 4310198587

Biz Afrika 985 Pty(Ltd) "Ellecon Holdings"

E L L E C O N G R O U P

Ellecon Pty(Ltd)
Building and Civils

Ellecon Roads and
Earthworks Pty(Ltd)

K2014

Eccon Plant Pty(Ltd)

Ellecon
Construction Pty(Ltd)
"Northern Cape"

A PYRAMID OF CONSTRUCTION EXCELLENCE

INTEGRATED "SHE" SYSTEM



Ellecon aims to maximize the benefit that our services hold for customers, employees and partners. To strive to do our daily tasks in a way that conforms to the requirements of relevant standards, legislation and other applicable requirements. Ellecon maintain an integrated Safety, Health & Environment (SHE) management system that complies with the requirements of the Occupational Health & Safety Act, 1993 and the Mine Health & Safety Act, 1996.

Ellecon is committed to provide a safe and healthy working environment for all its employees and sub-contractors and to develop a culture of safety that is not limited to only the workplace but extends to the private activities of the employees. Management ensure the availability of required resources necessary to continuously improve our defined SHE objectives and improve on the SHE performance operations.

Ellecon undertakes to ensure that our SHE Management system is developed, documented, implemented correctly and maintained in such a manner that it is both understood and effective at all levels in our business. It will enable us to:

- *Identify, assess and manage the significant business risks to all clients.*
- *Strive to achieve leading industry practices and recognitions.*
- *Meet, and where appropriate, exceed applicable legislation*
- *Define our SHE Quality objectives and targets (including reducing and preventing pollution); continually monitoring our activities and progress against our objectives*
- *Lead and develop our people and provide resources to:*
 - *Ensure competence in the workplace*
 - *Be aware of the potential hazards implicit in their work activities*
 - *Be aware of their scope of authority*
- *Support the fundamental human rights of our employees, contractors and the communities in which we serve and to safeguard them from exposure to unacceptable risks*
- *Minimize the impact of our operations on the environment through controlling pollution, waste, hazardous chemicals and the conservation of natural resources*
- *Design process that ensure cost effective and quality service / product*
- *Ensure that all activities are directed to meet and exceed customer's expectations*

Ellecon will regularly review our progress and communicate results to all our clients in order to enable us to build a relationship based on honesty, transparency and mutual trust. In engaging this, we will share the responsibility with our clients to meet the requirements of this policy.

To date, Ellecon has never had a Lost Time Injury. We are continuously scoring 90% + on our safety audits.

QUALITY POLICY STATEMENT



Ellecon concentrates on providing our clients with the highest levels of quality, professionalism and excellence on each project. To this end the Group utilises its management skills and resources in the most efficient and cost effective manner to produce projects of the required standard and quality.

Ellecon is committed to quality management by ensuring that best construction principles and practices are followed. The group is dedicated to ensure that continual improvement of our services and products ensure we meet the rising expectations of our client. Ellecon's quality standards are in line with the SANS standards as well the ISO 9001 requirements to ensure that certification can happen in the near future.

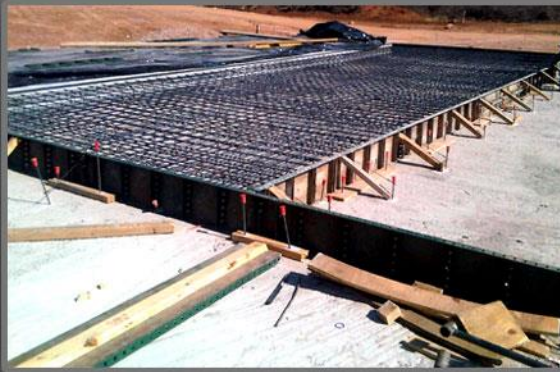
Quality objectives:

- *To deliver a quality product to our clients as per the contract requirements.*
- *To meet all legal and regulatory requirements.*
- *To provide the resources necessary to achieve the required level of quality.*
- *To ensure that documentary evidence of all quality control measures are in place.*
- *To ensure that all our subcontractors and suppliers meet our quality standards.*
- *To ensure continual improvement in the services that we render to our clients by getting feedback and reviewing our quality objectives.*
- *To ensure that our staff gets quality training according to our Quality Management System.*
- *To continually improve and implement quality control and best practice procedures.*



ELLECON

A PYRAMID OF CONSTRUCTION EXCELLENCE



A PYRAMID OF CONSTRUCTION EXCELLENCE

OUR PROJECTS



BUILDING & CIVILS

PROJECT	CLIENT	VALUE
Church building Alexandra	UCKG	R 11,000,000
Country Lodge	Le Buges San Dominique	R 6,000,000
Rom Ore Silo Drie Hoek Mine Steelpoort	Conform	R 6,800,000
Villa Sante Property Development	NNN Developments	R 9,900,000
North Rand Shopping Center Boksburg	M&F Developments	R 16,300,000
North Rand Shopping Center Boksburg	M&F Developments	R 7,000,000
Stellar House Office block	Stellar Transport	R 8,400,000
Northern Sewer Works Randburg	CA Brand	R 5,800,000
Olifants Vlei Sewer Works	CA Brand	R 5,200,000
New Warehouses Edenvale	N D'Alessio	R 6,400,000
Kelly Road Construction	Civilcon	R 2,000,000.
Blair Athol Pedestrian Bridge	Civilcon	R 5,000,000
Giurichich Residence	L Giurichich	R 6,800,000.
Warehouse & Parking lot	Leetech Electrical	R 2,300,000.
Nessary School	Italian Community	R 2,200,000
New Office Block	Quad Africa	R 8,200,000
Medical Clinic	Bafokeng Rasimone Mine	R 4,500,000
Pump Station & Sludge Reservoir	Royal Bafokeng Administration	R 6,400,000
Rehabilitation of Phokeng Sewage Plant	Royal Bafokeng Administration	R 5,000,000
Khumani Mine Expansion Project	CA Brand/DRA	R 37,000,000
Medupi Power Station Ash conveyors	Protech Khuthele	R 10,600,000
Maseve Platinum Mine Sub Stations	DRA Mining	R 12,000,000
Maseve Platinum Mine Box Cut Civils	DRA Mining	R 6,500,000
Underground Wash bay	Nkomati Mine	R 2,500,000
Open Pit Change House	Nkomati Mine	R 4,500,000
Maseve Platinum Mine Civil Works	DRA Mineral Projects	R 26,000,000
Bakubung Platinum Mine — Small Building Works	Scribante Construction	R 2,000,000
Maseve Platinum Mine — Various Building Works	DRA Mineral Projects	R 41,000,000
Warehouse Sasolburg	Stellar Transport	R 6,000,000
Underground Civils	Platinum Group Metals	R 27,000,000
Chrome Recovery Plant	Anglo American - Platinum/Logiman	R 4,500,000

OUR PROJECTS



ELLECON

A PYRAMID OF CONSTRUCTION EXCELLENCE

ROADS & EARTHWORKS

PROJECT	CLIENT	VALUE
Construction of 37.5km District Road	Dep. Of Public Works	R 38,700,000
Sludge dams, excavations & Bulk Earthworks	Impala Platinum Shaft 16	R 11,900,000
Internal Streets – Zeerust	Ngaka Modiri Molema Municipality	R 11,000,000
Internal Streets – Enselsrust, Mooipan	Ngaka Modiri Molema Municipality	R 10,800,000
Internal Streets – Postmasburg	Axsys Projects	R 16,700,000

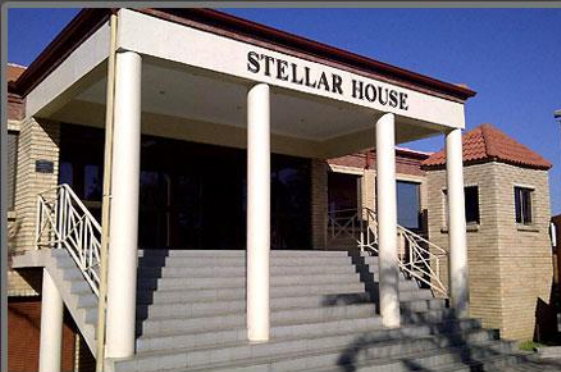


A PYRAMID OF CONSTRUCTION EXCELLENCE



ELLECON

A PYRAMID OF CONSTRUCTION EXCELLENCE



A PYRAMID OF CONSTRUCTION EXCELLENCE

OUR CONTACT DETAILS



ELLECON

A PYRAMID OF CONSTRUCTION EXCELLENCE

Head Office

Address:

564 Makou Street
Monument Park
Pretoria
0181

Postal Address:

P.O. Box 25202
Monument Park
0105

Contact Nos:

Tel: +27 (0)11 655 7112
Fax: +27 (0)86 659 1014
Email: info@ellecon.co.za / ottot@ellecon.co.za
Cell: 072 443 8858

Kuruman

Address:

1 Botha Street
Kuruman
8460

North West

Address:

0940 Madingotswane
Bethanie
Brits
0270

A PYRAMID OF CONSTRUCTION EXCELLENCE